

# artsMEDIA

Boston's Culture Magazine

## Critic's Pics

by Michael Cochran

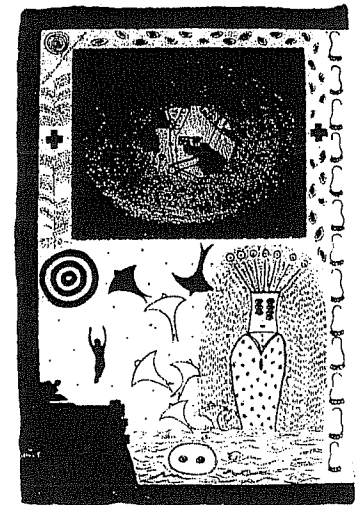
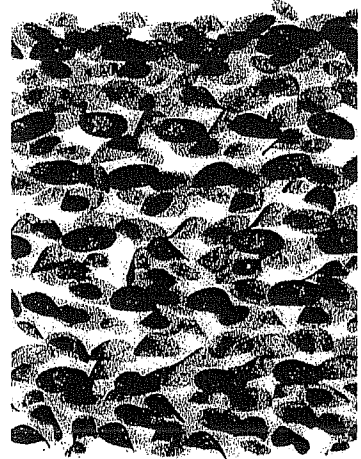
**D**rive quickly, but carefully, to Providence to see the last of a beautiful show at the David Winton Bell Gallery at Brown University. The exhibition entitled, "The Fabric of Light" features four local artists who focus on the dynamics of fabric and light continues only until July 11 but is well worth the trip. Nina Cinelli, Cristin Searles, Esther Solandz and Cynthia Treen all explore the many paradoxes of fabric — translucent yet dense, airy yet firm and always beautiful yet durable. Of particular note is Esther Solandz's large interactive silk sculpture that is suspended from the ceiling.

The Bell Gallery is located on the first floor of the List Art Center at 64 College Street. Also in Providence at the Bert Gallery, Director Cathy Little Bert has curated an exhibition called, "The Grand Tour: From the Canals of Venice to the Streets of Paris."

The show highlights the works of American painters who sought instruction abroad during the late nineteenth and early twentieth centuries. The late Gordon Peers, longtime instructor at RISD, is a featured artist as well as Nick Paciorek who still continues to paint in Northern Italy. The Bert Gallery is located at 540 South Water Street and the exhibition can be seen until August 27.

**J**ust north of Providence in Southeastern Massachusetts, the Attleboro Museum's Center for the Arts is kicking off its celebration of ten years since the nearly eighty-year-old organization relocated to down Attleboro.

The exhibition title, "Ten Members, Ten Visions, Ten Years," seems to make that point effectively and features



Top: detail of a work by Cristin Searles at Brown University, Providence.

Above: Nancy Aleo's "Santa Lucia Map Series IV at the Attleboro Museum.

the work of ten professional artist-members from Maine, Massachusetts, Rhode Island and even Colorado. Selected by outside jurors Bonnie Crane, Bob Rizzo and Carlton Plummer, the standouts in the show are the drawings of Nancy Aleo inspired by a painting of St. Lucia and the hand-formed abstract bronze sculptures of Ray Sauer.

The museum is located at 86 Park Street near Route 123 and the show can be viewed from July 18 through August 21.